

# Connecting to Guest – Mac OS X 10.3.3+

Revised 8-8-09

For **Guests** of Millsaps Faculty, Staff, and Students

## Areas with Wireless Access

As the campus wide wireless plan nears completion areas will continuously be added to the list of active Hotspots. At this point connection to the wireless network is available in all academic, residential and instructional areas. Connection to the wireless can also be reached in athletic facilities, the Millsaps Bowl, and the Plaza, which is located adjacent to the Student Center and the HAC.

## Requirements for Access

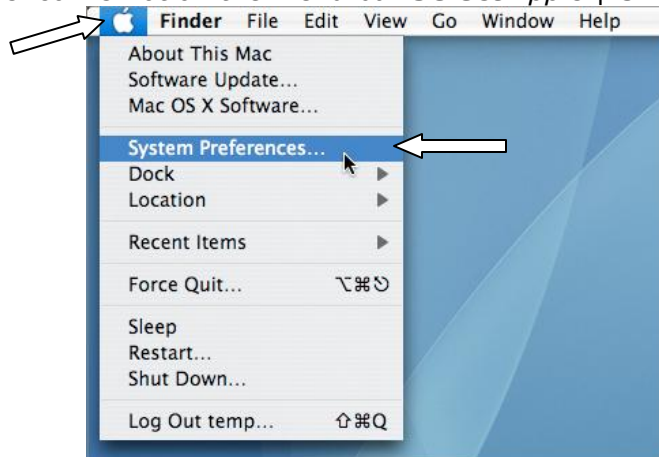
You must have a computer equipped with an 802.11b/g-compatible wireless card. The supported encryption type is available only with Macintosh OS X 10.3.3 and greater.

## Step 1 – Enabling your AirPort or other wireless card

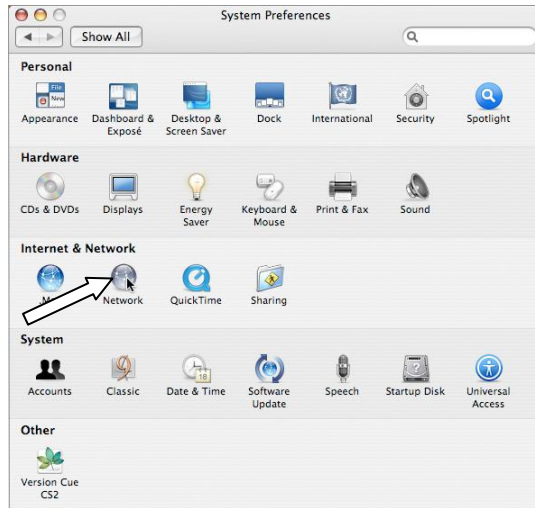
Turn on your computer and make sure that the wireless card is activated. To do this **Click** the *AirPort status* icon on the menu bar located at the top. The AirPort Status icon can be identified as a dot with three concentric quarter circles emanating outward. This icon is used to quickly change wireless settings and verify wireless connection status. If you see this icon, skip on to **Step 2 – Connecting to the Guest Network**.



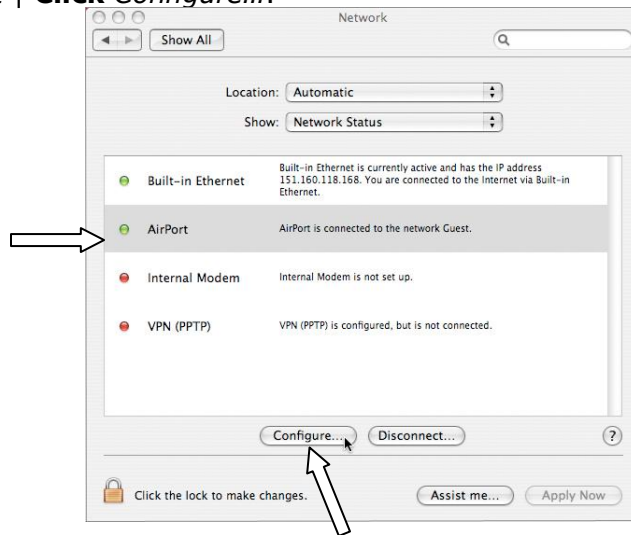
If the AirPort status icon is not on the menu bar **Select Apple | Click System Preferences...**



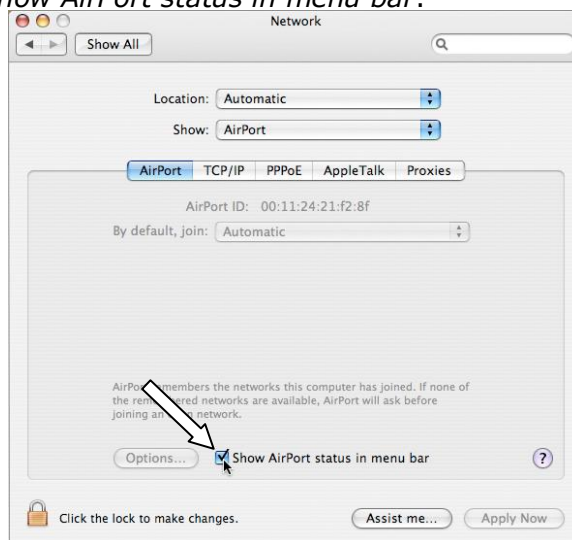
In System Preferences **Select Network**.



Next **Select AirPort | Click Configure...**

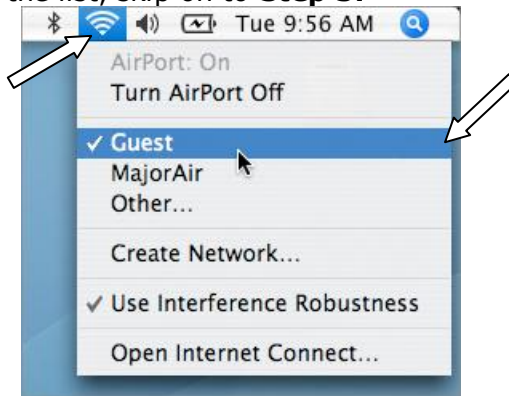


At the checkbox **Click Show AirPort status in menu bar**.



## Step 2 – Connecting to the Guest network

**Click** the *AirPort status* icon | **Click** *Guest* from the list of available networks to connect to it. At this point you are now connected to the Guest network. If you cannot complete this step because Guest is not in the list, skip on to **Step 3**.



## Step 3 – Manually Connecting to the Guest Network

If *Guest* is not visible in the above list, **Click** *Other...*  
Enter the following information:

**Network Name: Guest**  
**Wireless Security: None**

Then **Click** *OK*. Your Mac should now automatically connect to the Guest network once you are in its range.



## Step 4 – Agreeing with the Millsaps College Policy for the Ethical Use of Computing Facilities

Open *Safari*.

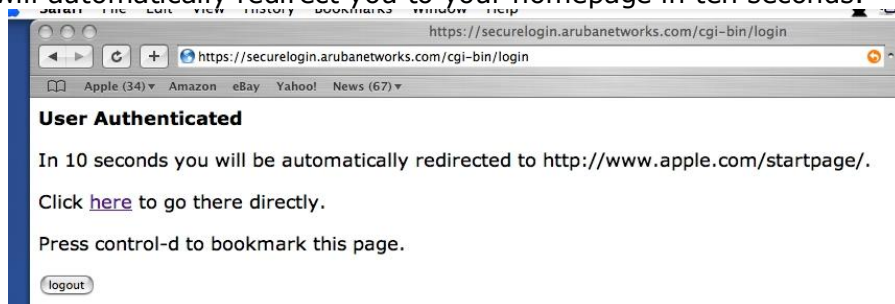
Your browser will be automatically redirected to the Aruba login screen. Please take a moment to read the *Acceptable Use Policy*.

Type in your email address under *Guest User*.

Click *Log In*.



After logging in as a Guest User you will receive confirmation of successful authentication. This screen will automatically redirect you to your homepage in ten seconds.



For assistance, please call, email, or visit:

**HelpDesk at 601-974-1144, HelpDesk@millsaps.edu, or Academic Complex 105**

Support for Millsaps Faculty, Staff, Graduate Students, Commuter Students, and Guests  
Open Monday-Friday from 8am-8pm

**ResNet at 601-974-1899, ResNet@millsaps.edu, or New South Hall 125**

Support for On-Campus Undergraduate Millsaps Students  
Open Sunday-Thursday from 6pm-10pm and Friday-Saturday from 1pm-5pm